

Slog Square Electromech Pvt. Ltd.

An ISO- 9001:2015 Certified Company





What we stand for

Sincere

To deliver quality product within time committed.

Logical

To provide best engineering solution to our customer.

S

L

O

G

To make optimum use of resources available.

Organized

To improve every day in order to meet global challenges.

Global



Company Profile



Plant-1
Established in 2006 we started specializing in Special Purpose Machines, Jigs & Fixtures, technological up-gradation of conventional machine Tools etc.



Plant-2
With an in-house design and manufacturing facilities, we are in the forefront to provide best solutions in the field of machining, testing and assembly



Timeline

We started specializing in Special Purpose Machine, Jigs & Fixtures, technological up-gradation of conventional machine Tools etc.

2006

Second unit of Slog was established

2018

First export

2016

Slog Square expands it's manufacturing unit with the introduction of VMC machine to achieve better production quality

2020



Plant-I





Plant -II





Plant II Assembly Area



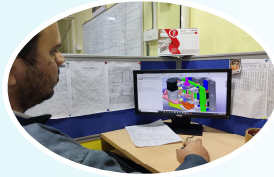


Why automation?

- ▶ Higher production rates and productivity
- ▶ Eliminates human error
- ▶ Reduction in rejection rate
- ▶ Improved quality
- ▶ Saves time and money
- ▶ Improved safety



Why Slog?



Enthusiastic team of young technocrats, which also make us receptive to the new ideas and concepts.



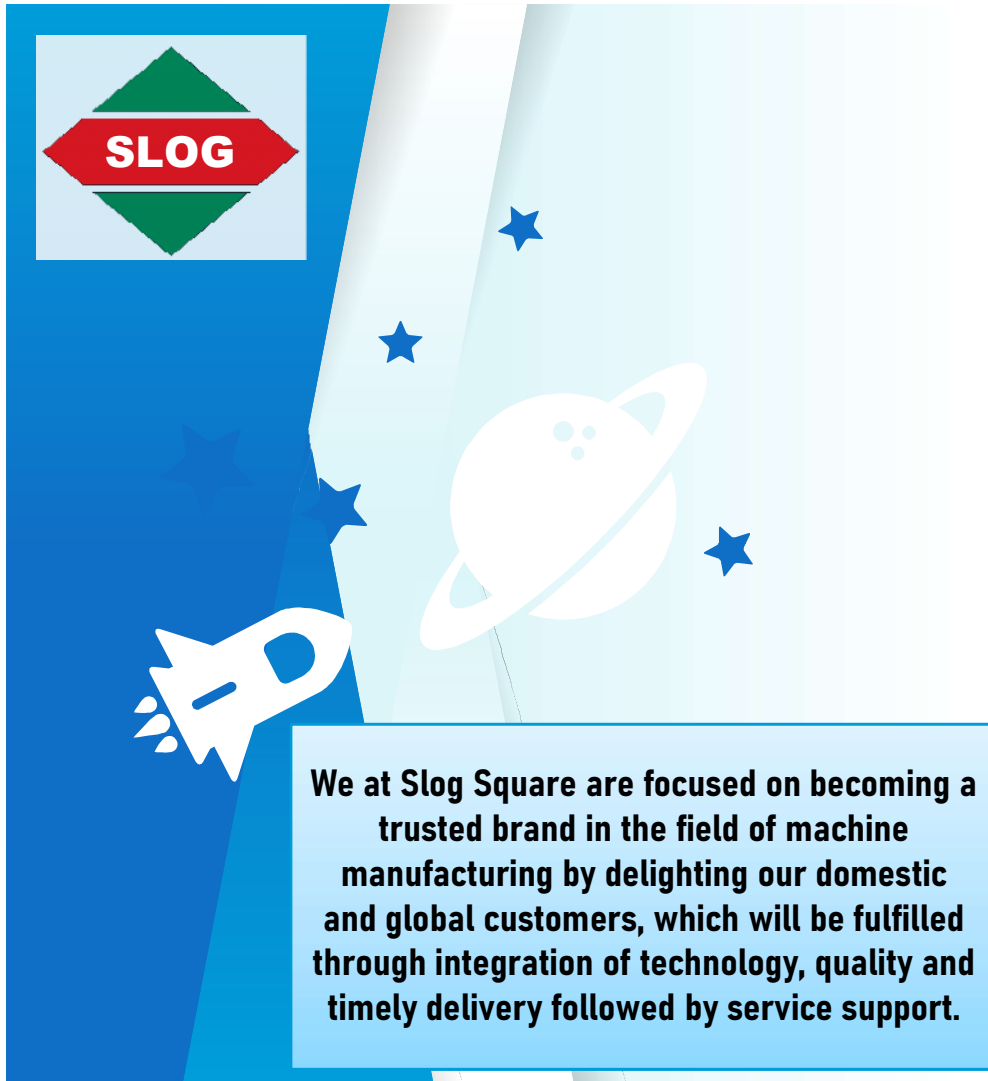
Always keen to learn, adapt and adopt.



Understand the need of quality standards adapted by our customers and maintain the same during the execution of work order given to us.



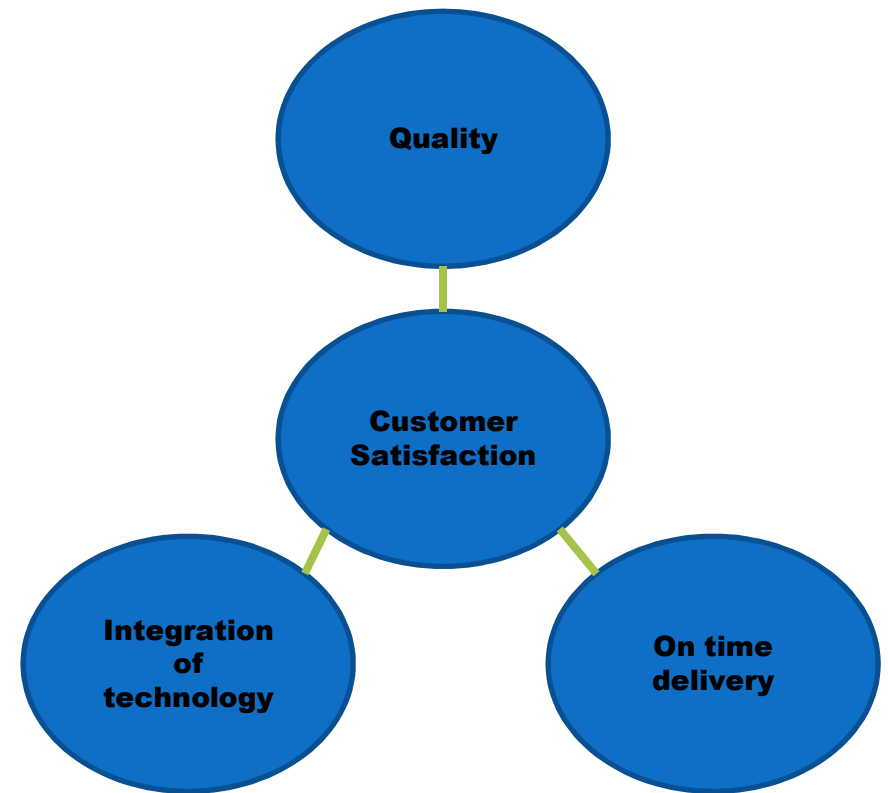
Upgrade ourselves at regular intervals for latest technologies and global requirements .



SLOG

We at Slog Square are focused on becoming a trusted brand in the field of machine manufacturing by delighting our domestic and global customers, which will be fulfilled through integration of technology, quality and timely delivery followed by service support.

Our Vision

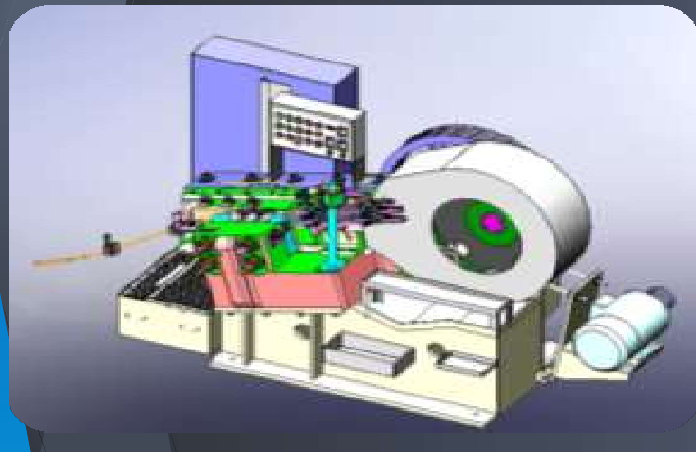




Design and Development

- ▶ Slog's success lies in its strong in-house R&D.
- ▶ Backed by experienced as well as young workforce slog's design sector has the right mixture of experienced and fresh minds.





Solidworks

Equipped with with multiple workstations and lincensed Solidworks software.





Electrical department

- ▶ Slog is backed with electric professional with sound knowledge about automation.
- ▶ Our electrical department looks after panel making, wiring and programming.





Quality Orientation



Being SPM manufacturers, we truly perceive and pursue the heart and soul of every machine we build and every tool we make.



Meeting the design tolerances and satisfying the customer needs is very important. Keeping that in mind Slog has a quality department with experienced professionals



Each and every part of a machine is inspected using highly accurate tools and a quality report of the same is made.



SLOG

Quality tooling,
jigs and
fixtures

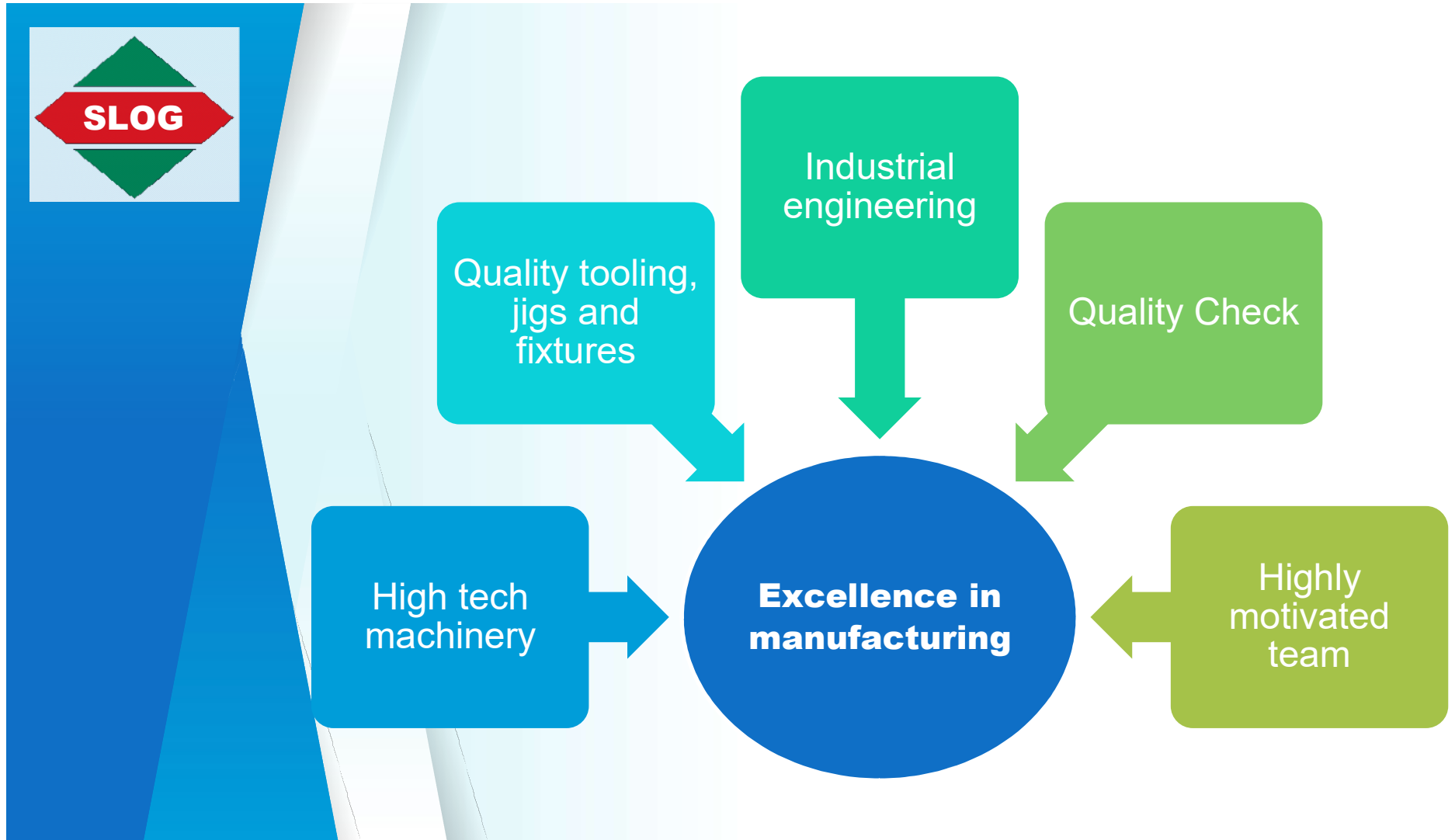
Industrial
engineering

Quality Check

High tech
machinery

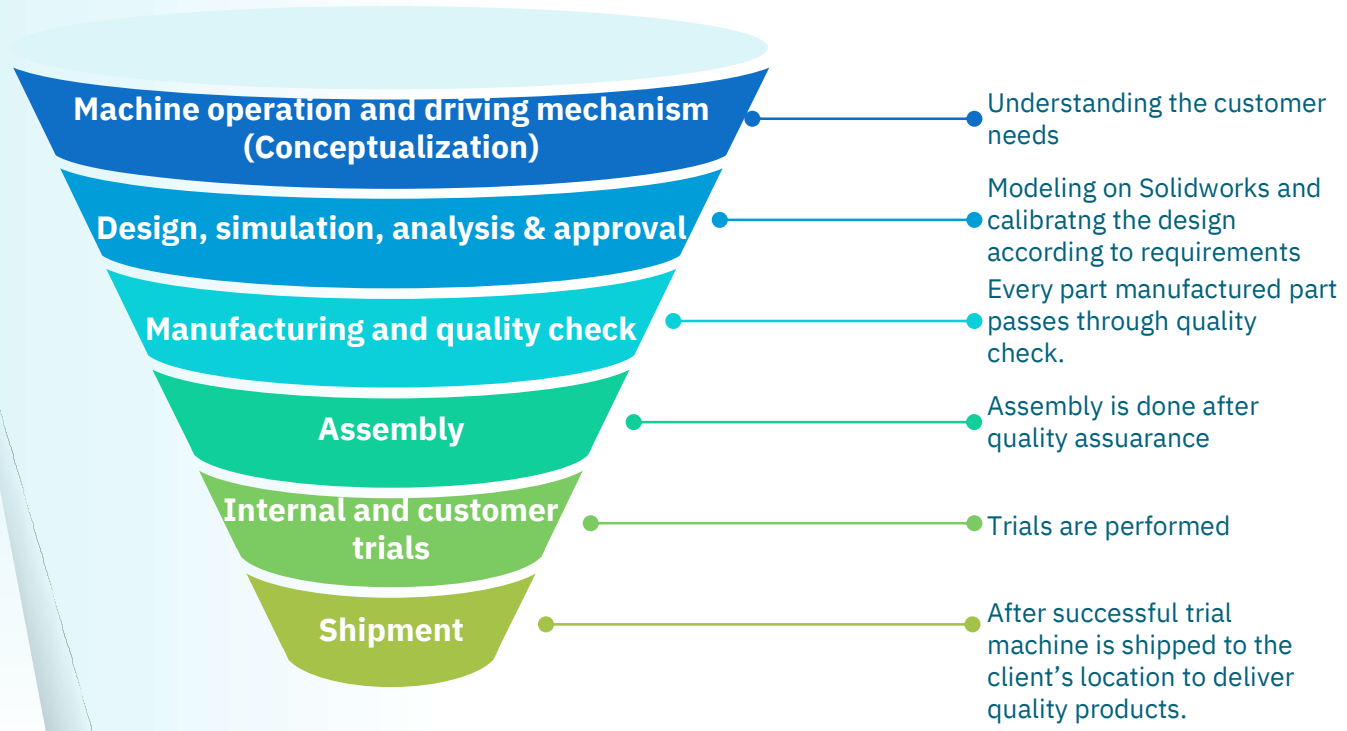
**Excellence in
manufacturing**

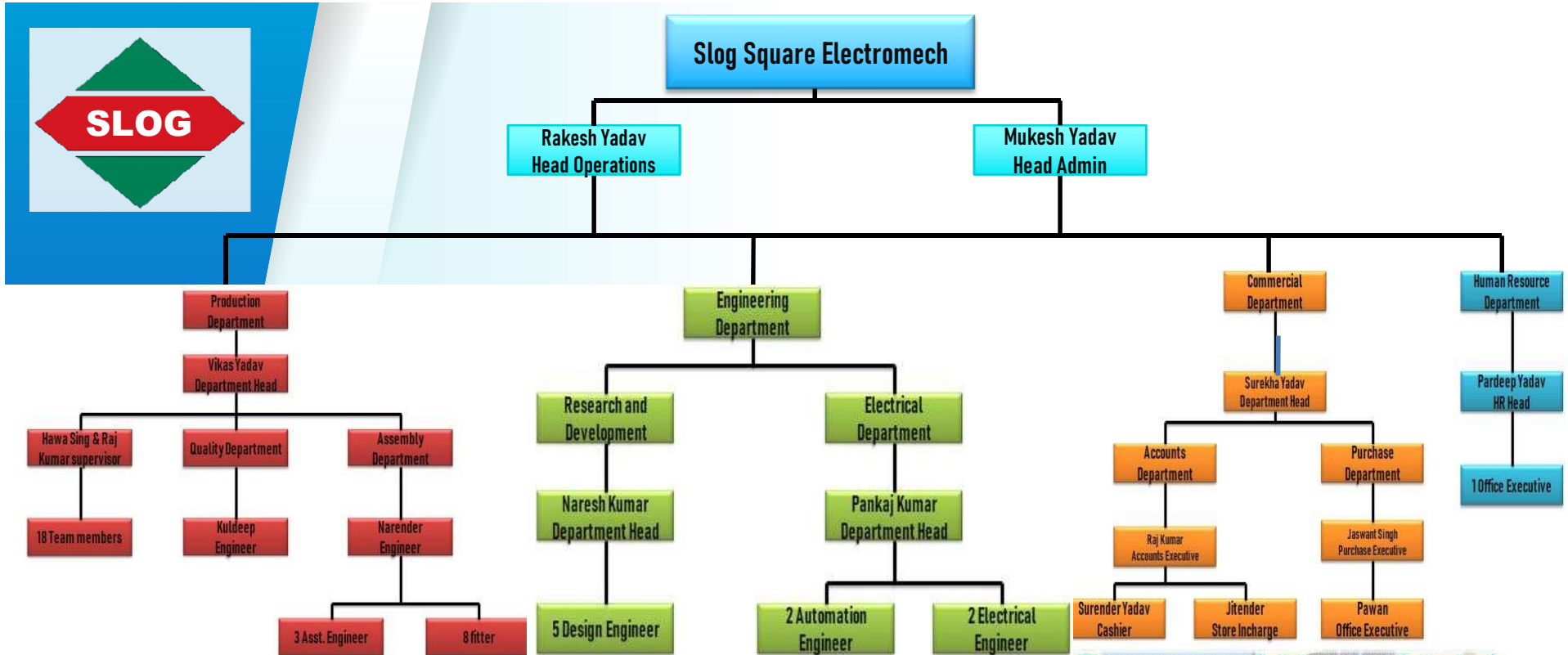
Highly
motivated
team





Engineering process







Special Purpose Machines

Assembly & pressing Machines

- Servo
- Hydraulic
- Pneumatic

Machining Machines

- Drilling
- Tapping
- Cutting
- Deburring
- Buffing
- Facing

Testing Machines

- Leak test
- Auto torque
- Run Out test
- Servo driven UTM

Others

- Washing Machines
- Caulking Machines
- Straightening Machines
- Welding SPM's and fixtures



Our Products

Assembly machines



Machine Name - Ball Joint Assembly Machine
Machine Type - Assembly
Customer - Somic ZF



Machine Name - PURGE JOINT PRESSING
Machine Type - Assembly
Customer - Keihin FIE

SLOG

Assembly machines



Machine Name - Shock Absorber Assembly
Machine Type - Assembly
Customer - TENNECO



Machine Name - Straight Plug Pressing SPM
Machine Type - Assembly
Customer - Keihin FIE

SLOG

Assembly machines



Machine Name - Bush Press Machine
Machine Type - Assembly Machine
Customer - RANCON MOTOR BIKES LTD,
Bangladesh



Machine Name - Bush, Seal & Bearing Assembly
Machine Type - Assembly Machine
Customer - BEST KOKI



Pressing machines



Machine Name - Combo Pressing Machine
Machine Type - Pressing & Assembly
Customer - Best Koki



Machine Name - Ball Joint Press Machine
Machine Type - Pressing
Customer - Somic ZF



Pressing Machines



Machine Name - Bush Press Machine
Machine Type - Pressing
Customer - Somic ZF



Machine Name - Fuel Joint Pressing
Machine Type - Assembly Press
Customer - Keihin FIE



Straightening



Machine Name - Straightening Machine
Machine Type - Straightening
Customer - Shriram Piston & Rings Ltd

Deburring



Machine Name - Clutch Plate Deburring
Machine Type - Deburring
Customer - FCC



Testing Machines



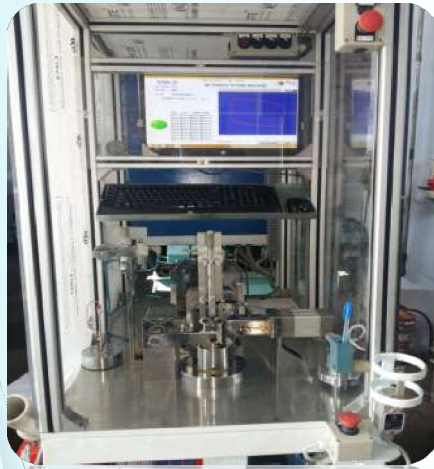
Machine Name - Leakage & Length Testing Machine
Machine Type - Dry Test Machine
Customer - SHRIRAM PISTONS & RINGS LTD



Machine Name - Universal Testing Machine
Machine Type - Testing Machine
Customer - Somic ZF



Testing machines



Machine Name – IBJ Auto Torque testing
Machine Type – Testing Machine
Customer – Somic ZF



Machine Name – Fuel Tank Leakage Testing
Machine Type – Testing Machine
Customer – Suzuki Two Wheeler

SLOG

Drilling and Tapping Machines



Machine Name - Drilling & Tapping Machine
Machine Type - Drilling & Tapping
Customer - Keihin FIE



Machine Name - Drilling Machine
Machine Type - Drilling Machine
Customer - Keihin FIE



Drilling and Tapping machine



Machine Name - Drilling Machine (Upto Ø35mm)
Machine Type - Drilling Machine
Customer - Somic ZF



Machine Name - Drilling Tapping SPM
Machine Type - Drilling Machine
Customer - UniPart



Washing Machine



Machine Name - Water Washing Machine
Machine Type - Washing
Customer - Keihin FIE



Machine Name - Air Washing SPM
Machine Type - Washing
Customer - Keihin FIE



Buffing Machine



Machine Name - Buffing SPM
Machine Type - Buffing Machine
Customer - Rane NSK

Caulking Machine



Machine Name - Caulking SPM
Machine Type - Caulking Machine
Customer - SANKEI



Facing Machine



Machine Name - Facing & Deburring Machine
Machine Type - Facing Machine
Customer - Keihin FIE

Welding Machine



Machine Name - Double Torch Welding SPM
Machine Type - Welding Machine
Customer - UNIPART



Variety of Conveyors

- ▶ Turn table
- ▶ Inspection conveyors
- ▶ Up Down conveyor
- ▶ Belt conveyor
- ▶ Roller conveyor



Conveyers



**Machine Name - Glass Transfer
Conveyor**
Machine Type - Conveyor
Customer - ASAHI INDIA GLASS LTD



Machine Name - Roller Conveyor
Machine Type - Conveyor
Customer - ASAHI INDIA GLASS LTD



Contact Us

Plant-1

**Plot no.200, Sector-3,
IMT Bawal-123501,
Rewari, Haryana,
India**

Plant-2

**Plot no. 171, Sector-9,
IMT BAWAL-123501,
Rewari, Haryana, India**

Office. +91 9315868644/ 7982062643

Email ID rakesh.yadav@slogsquare.com

WEB: www.slogsquare.com

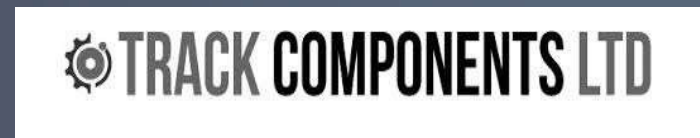


Our Clients





Our Clients





Thank You!